



BlueprintProperties
Bringing Home Results



2 St. Ives Place, London, E14 0GU **Asking Price £350,000**

Private Wrap Around Terrace | Ground Floor New Build Apartment | Luxury Specification Throughout | Flexible Viewings

This luxurious one bedroom apartment is finished to an exceptional standard with modern fixtures and fittings throughout. The property boasts its own private entrance with a huge wrap around ground floor terrace, inside the property comprises a large open plan living/kitchen area, well sized double bedroom and a fully tiled bathroom. The apartment is set just off the River Lea with great transport links into Canary Wharf and the City. The ideal home in the ever-growing London E14 location. Call now to arrange a viewing.

Kitchen Living & Dining

26'2" x 10'11" (7.98 x 3.33)

The custom-designed kitchen provides for a home that allows you to entertain and enjoy cooking. The contemporary composite work surface, large stainless steel 1 1/2 bowl sink, and a full range of energy-efficient integrated appliances including Hob, Electric Oven, Dishwasher, Fridge Freezer, and Washer Dryer allow you to cook whatever your heart desires.

Bathroom

8'11" x 8'4" (2.73 x 2.56)

Relaxing bathroom suite, boasting Carrera ceramic wall and floor tiles, white sanitaryware and chrome finished heated towel rail and monobloc mixer taps.

Bedroom

15'2" x 10'4" (4.64 x 3.16)

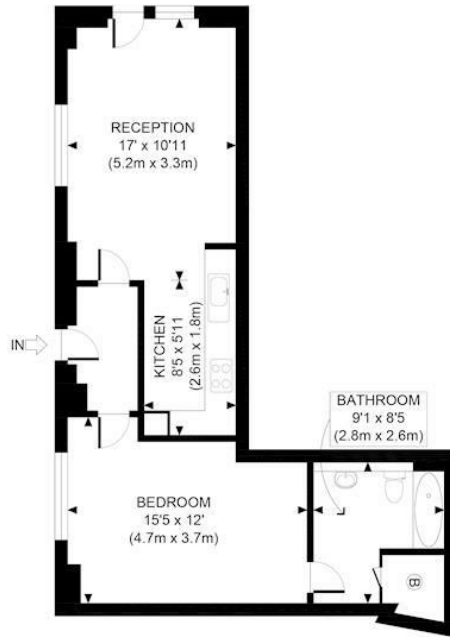
Neutral colour emulsion paint to walls, gloss finish to skirtings and architrave, grey carpet throughout, chrome light switches and plug sockets including USB outlets. Satellite TV has been provided to all bedrooms.

Internal Finishes & Decor

Smooth plastered finish to all walls and ceilings, comprising an interiorly designed colour pallet throughout with emulsion paint finish to walls and ceilings, and a gloss finish to all skirtings and architrave. All internal doors are paint grade single panel moulded doors with complementary chrome door furniture complementing both the engineered wooden flooring situated within the Kitchen / living room and hallway, as well as the quality pile carpet to the bedroom areas.

Chrome recessed ceiling downlighters to hallways, living / dining room and the bathroom areas, with a ceiling pendant to all bedrooms. Contemporary chrome finish light switches and sockets throughout, and the provision for broadband, telephone and satellite TV has been provided to the living room and bedrooms.

Floor Plan



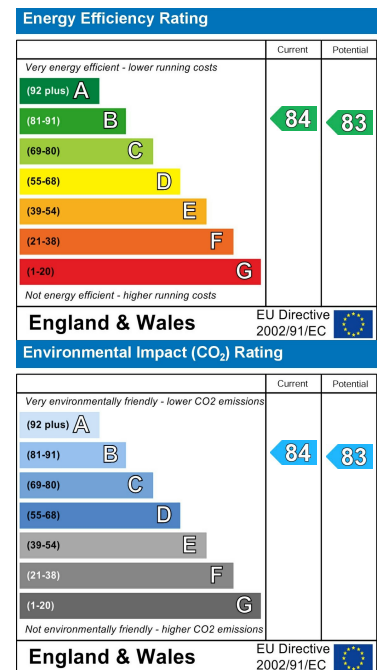
GROUND FLOOR
GROSS INTERNAL
FLOOR AREA 535 SQ FT

APPROX. GROSS INTERNAL FLOOR AREA 535 SQ FT / 50 SQM	St Lves PI
Disclaimer: Floor plan measurements are approximate and are for illustrative purposes only. While we do not doubt the floor plan accuracy and completeness, you or your advisors should conduct a careful, independent investigation of the property in respect of monetary valuation	date: 22/05/21
	photoplan

Area Map



Energy Efficiency Graph



These particulars, whilst believed to be accurate are set out as a general outline only for guidance and do not constitute any part of an offer or contract. Intending purchasers should not rely on them as statements of representation of fact, but must satisfy themselves by inspection or otherwise as to their accuracy. No person in this firm's employment has the authority to make or give any representation or warranty in respect of the property.